

## SPEC SHEET + MEASUREMENTS

**DISTRICT**

### District® Women's Re-Fleece™ Hoodie. DT8101

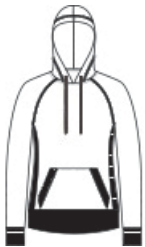
#### Product photo



Our most sustainable fleece yet. District Re-Fleece breathes new life into reclaimed materials with its 100% recycled fabric. Affordable, comfortable and never re-dyed, it's a fleece that just feels good.

- 8.1-ounce (275 GSM)
- 60% recycled cotton/40% recycled polyester
- 54% recycled cotton/40% recycled polyester/6% recycled rayon (Light Heather Grey)
- This product's carbon footprint has been measured and reduced through a combination of preferred materials and investing in carbon offset projects through the ClimeCo Certified Product™ Program
- Recycled natural color twill back neck tape
- Recycled natural color drawcords
- 2x1 rib knit side panels, cuffs, pocket opening and hem
- Side seamed
- Coverstitch details throughout
- Undyed, recycled, tear-away label

#### Sketches



front



back

*The production process infuses each garment with unique character. Please allow for slight color variation. **A C-FREE® Product***

We start by reducing the product's impact by switching to at least 50% preferred materials. We then measure and reduce the total carbon footprint of each product in the C-FREE program—from cradle-to-grave—through the ClimeCo Certified Product™ Program. This certification purchases third-party, verified carbon offsets through ClimeCo.

#### **CARE INSTRUCTIONS**

# SPEC SHEET + MEASUREMENTS



## District® Women's Re-Fleece™ Hoodie. DT8101

Machine Wash Cold With Like Colors. Do Not Bleach. Tumble Dry Low. Cool Iron If Necessary.

### PRODUCT MEASUREMENTS

	XS	S	M	L	XL	XXL	3XL	4XL
Size	2	4/6	8/10	12/14	16/18	20/22	24/26	28/30
Body Length at Back	26	26 1/2	27	27 1/2	28	28 1/2	29	29 1/2
Bust	17 3/4	18 3/4	19 3/4	21 1/4	22 3/4	24 1/4	26 1/4	28 1/4
Raglans and Dolmans Sleeve Length	31 1/2	32	32 1/2	33 1/8	33 3/4	34 3/8	34 3/4	35 1/8

**Body Length at Back:** Measured from high point shoulder to finished hem at back.

**Bust:** Measured across the chest one inch below armhole when laid flat.

**Raglans and Dolmans Sleeve Length:** Measure from neck edge to finished hem.

### SIZE CHARTS

	XS	S	M	L	XL	XXL	3XL	4XL
Size	2	4/6	8/10	12/14	16/18	20/22	24/26	28/30
Bust	32-34	35-36	37-38	39-41	42-44	45-47	48-51	52-55

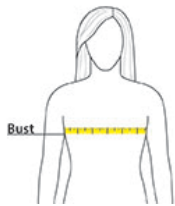
# SPEC SHEET + MEASUREMENTS



District® Women's Re-Fleece™ Hoodie. DT8101

## HOW TO MEASURE

---



### BUST

Measure under the arm and around the fullest part of the bust with arms down, keeping tape horizontal.

## COLORS

---



Black  
PMS BLACK  
C



Charcoal  
Heather  
PMS 426C



Heathered  
Navy  
PMS 2379C



Light Heather  
Grey  
PMS COOL  
GREY 5C



Maroon  
Heather  
PMS 7421C